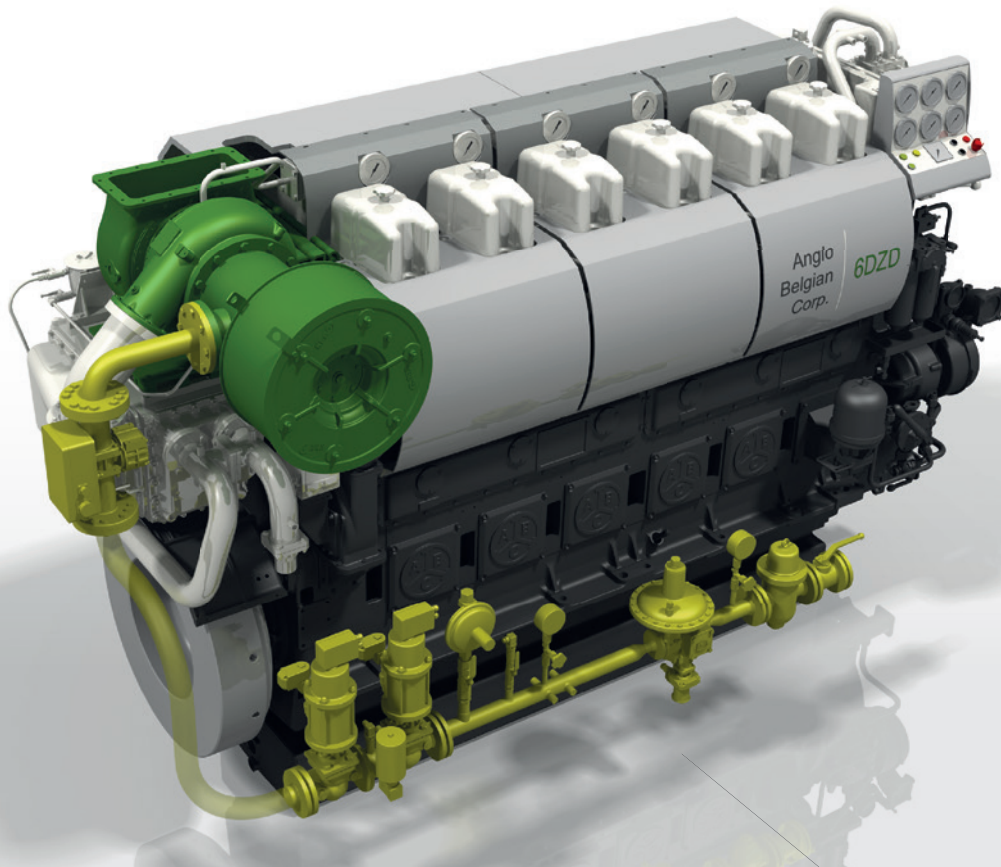




**ANGLO BELGIAN
CORPORATION**

We power your future

Datasheet



Engine type

Dual Fuel DZD / (V)DZD

Datasheet ABC dual fuel engines type DZD and (V)DZD

Operational circumstances based on ISO-conditions (ISO 3046-I).

ABC reserves the right to alter the technical data without prior notice.

Definition

- DZD:** Medium speed DZ engine » Turbocharged & intercooled
- (V)DZD:** Medium speed (V)DZ engine » Available in Anti-clock and Clock rotation
- » Built for dual fuel execution

Basic data

Engine type	6 DZD	8 DZD	12 DZD	16 DZD
Swept volume (liters)	95,7	127,6	191,5	255,2
Number of Cylinders	6	8	12	16
Bore (mm)	256	256	256	256
Stroke (mm)	310	310	310	310
Compression ratio	12,1:1	12,1:1	12,1:1	12,1:1
Brake mean effective pressure (bar)	12,5	12,5	12,5	12,5

Power

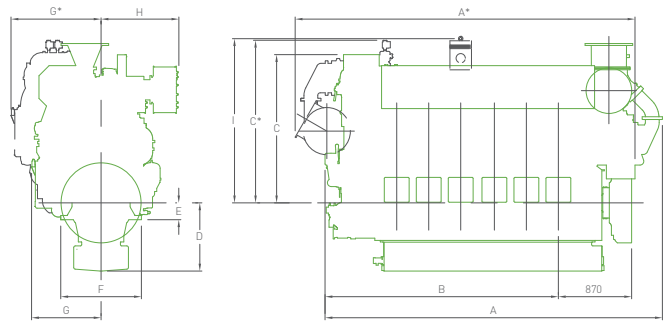
Engine type	rpm	Engine power (ISO 3046 - I) kW	Nominal power of gensets DZD and (V)DZD			
			50 Hz electric - 3 phase		60 Hz electric - 3 phase	
			P _w (kW)	P _n (kVA)	P _w (kW)	P _n (kVA)
6 DZD	720	720	---	---	684	855
	750	750	713	891	---	---
	900	900	---	---	855	1069
	1000	1000	950	1188	---	---
8 DZD	720	960	---	---	912	1140
	750	1000	950	1188	---	---
	900	1200	---	---	1140	1425
	1000	1335	1268	1585	---	---
12 DZD	720	1440	---	---	1368	1710
	750	1500	1425	1781	---	---
	900	1800	---	---	1710	2138
	1000	2000	1900	2375	---	---
16 DZD	720	1920	---	---	1824	2280
	750	2000	1900	2375	---	---
	900	2400	---	---	2280	2850
	1000	2670	2537	3171	---	---

Conversion factors used: Generator efficiency: $\eta_g = 0,95 \rightarrow$ Power factor: $\cos \varphi = 0,8$

Natural gas with Methane Index = 73 \rightarrow Lower Calorific Value gas = 39.000 kJ/Nm³ \rightarrow Lower Calorific Value diesel = 42.700 kJ/kg

Possible gases: natural gas, waste gas, landfill gas (the ability to burn other gases should be done in consultation with ABC)

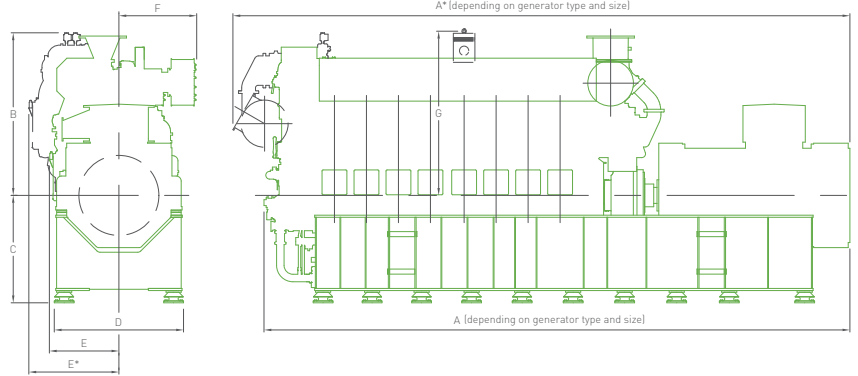
6/8DZD engine



* Turbocharger at free end side ** Flywheel, vibration damper and coolers are included

	A (mm)	A* (mm)	B (mm)	C (mm)	C* (mm)	D (mm)		E (mm)	F (mm)	G (mm)	G* (mm)	H (mm)	I (mm)	Dry mass** (kg)
						[Shallow]	[Deep]							
6DZD	4007	4036	2771	1761	1931	508/650	710/810	200	958	826	1070	924	1950	10720
8DZD	4767	4796	3531	1761	1931	508/650	710/810	200	958	826	1070	924	1950	14005

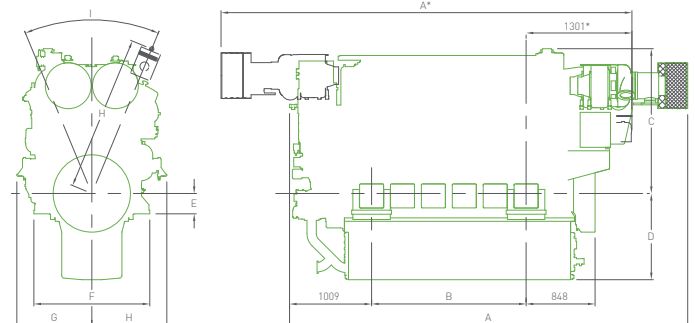
6/8DZD genset



* Turbocharger at free end side ** Genset total mass depending on generator type and size

	A (mm)	A* (mm)	B (mm)	C (mm)	D (mm)	E (mm)	E* (mm)	F (mm)	G (mm)	Dry mass** (kg)
6DZD	6037	6406	1931	1276	1535	826	1070	924	1950	22200
8DZD	6959	7328	1931	1276	1535	826	1070	924	1950	26600

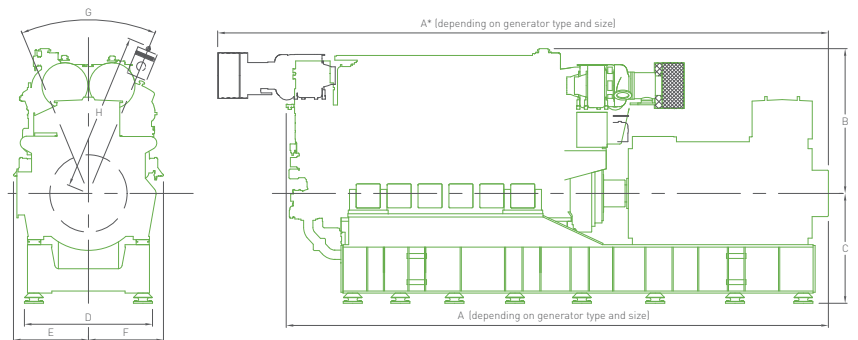
12/16DZD engine



* Turbochargers at free end side ** Flywheel, vibration damper and coolers are included

	A (mm)	A* (mm)	B (mm)	C (mm)	D (mm)	E (mm)	F (mm)	G (mm)	H (mm)	I (°)	J (mm)	Dry mass** (kg)
12DZD	4896	5053	1900	1780	1060	250	1425	925	925	45	1950	18200
16DZD	5656	5813	2660	1780	1060	250	1425	925	925	45	1950	21950

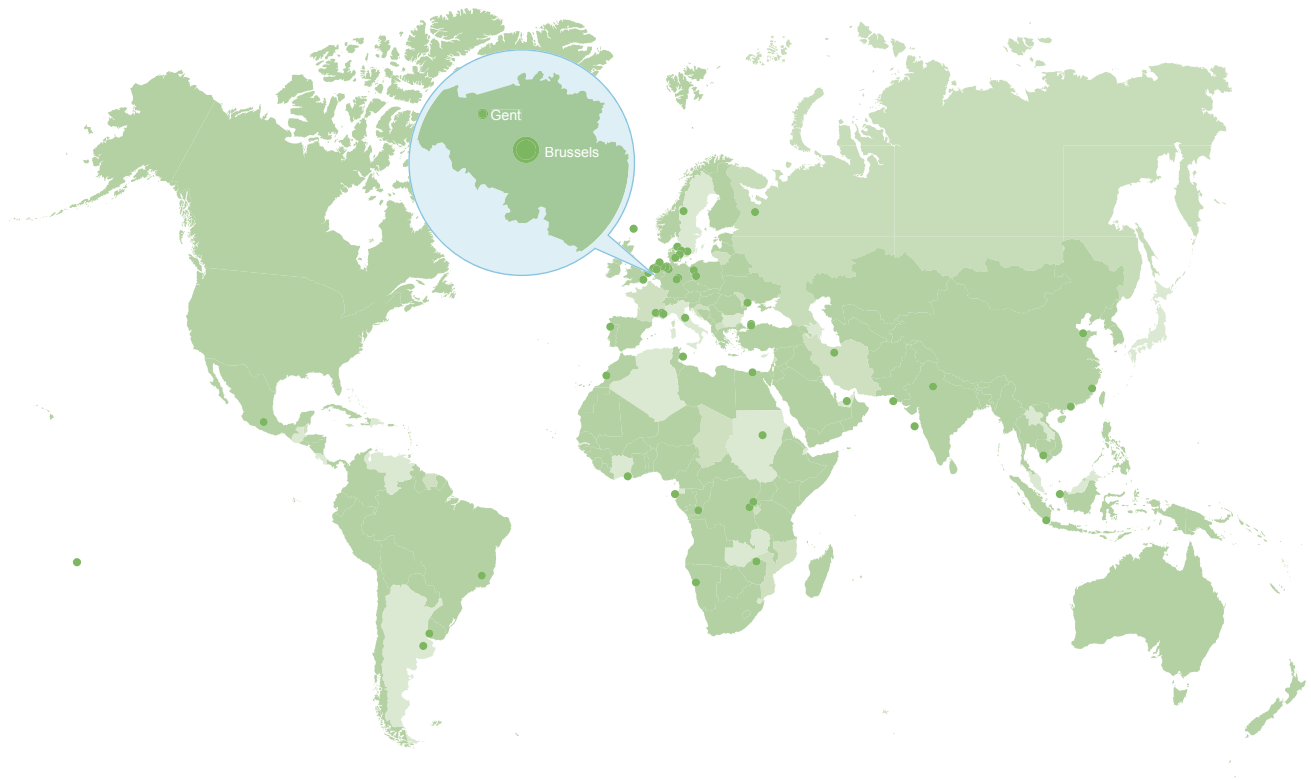
12/16DZD genset



* Turbochargers at free end side ** Genset total mass depending on generator type and size

	A (mm)	A* (mm)	B (mm)	C (mm)	D (mm)	E (mm)	F (mm)	G (°)	H (mm)	Dry mass** (kg)
12DZD	6667	7510	1780	1351	1575	925	925	45	1950	33700
16DZD	7847	8690	1780	1351	1575	925	925	45	1950	43400

Service- and sales support worldwide



Africa

12 Sales
11 Service

America

3 Sales
2 Service

Asia

11 Sales
8 Service

Europe

32 Sales
33 Service

Oceania

1 Sales
1 Service

To find out more detailed information about our service and sales support, please visit our website www.abcdiesel.be



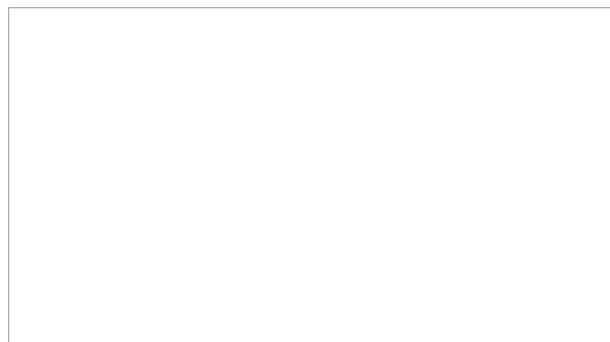
Contact details

Anglo Belgian Corporation
Wiedauwkaai 43
9000 Gent (Belgium)

T +32 (0)9 267 00 00
F +32 (0)9 267 00 67
E info@abcdiesel.be

www.abcdiesel.be

Member of the **Ogepar group**



ISO 9001 : 2008

BUREAU VERITAS
Certification



All data provided in this document is non-binding. This data serves informational purposes only and is especially not guaranteed in any way. Depending on the subsequent specific individual projects, the relevant data may be subject to changes and will be assessed and determined individually for each project. This will depend on the particular characteristics of each individual project, especially specific site and operational conditions.